

**CERTECON**  
**850 – 1800**



## Exhaust gas heat exchanger at a glance

### Energy Saving with CERTECON

#### CERTECON Flue gas heat exchangers

An innovative solution for saving energy during operation of the oil- or gas-heated CERTUSS steam generators of the Universal 500 – 1800 series.

For the Universal 500 – 600 the exhaust gas heat exchanger CERTECON 250 – 400 with a lower heat output can be used alternatively.

Depending on the output level, operating pressure and utilization of the steam generator, the combustion-specific degrees of efficiency increases to up to 98%.

#### CERTECON Flue gas heat exchangers

are compact with small dimensions are inserted horizontally or vertically in the flue gas flue between the steam generator and exhaust gas stack.

At the water end they have to be installed between the boiler feed pump and the steam generator.

#### CERTECON Flue gas heat exchangers

continuously return the gained energy to the steam generators. The burner output is reduced correspondingly.

External heat intake is not required.

They are approved solely for the operation with CERTUSS steam generators.

#### CERTECON Flue gas heat exchangers

have a robust heat exchanger package made of high-quality boiler tubes. They are adapted optimally to the respective sizes of the CERTUSS steam generators. Depending on the boiler size the flue gas temperature is reduced to 130 °C to 160 °C, whereby the danger of the dew point being underpassed in the exhaust gas stack is avoided.

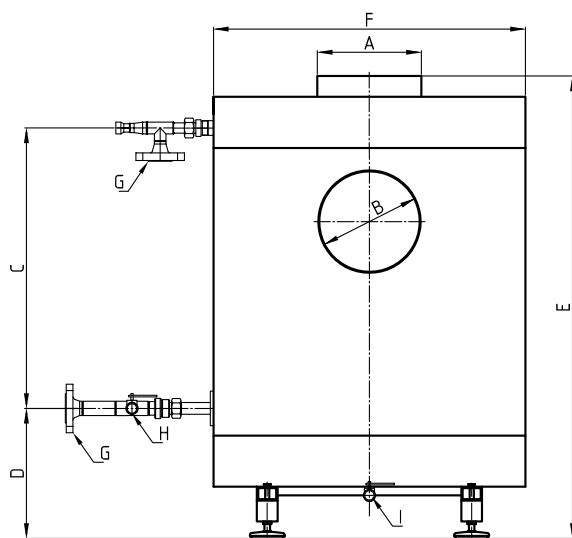
#### CERTECON Flue gas heat exchangers

are protecting the heating system of the CERTUSS steam generator system respectively used against deposits and corrosion through the dew point being underpassed during intermittent operation with non-optimal feed water during operation.

The heating coil is divided into two parts and can be replaced easily.

#### CERTECON Flue gas heat exchangers

are manufactured in accordance with the European Pressure Equipment Directive 2014/68/EU and have a CE marking.



CERTECON		850	1300	1800			
<b>CERTUSS Steam Generator Universal</b>		<b>700 – 850</b>	<b>1000 – 1300</b>	<b>1500 – 1800</b>			
<b>A</b> Flue gas inlet Ø internal	mm	300	350	500			
<b>B</b> Flue gas outlet Ø external	mm	295	345	495			
<b>C</b> Connecting piece distance	mm	850	900	940			
<b>D</b> Distance floor / connecting piece	mm		355				
<b>E</b> Height	mm	1325	1385	1450			
<b>F</b> Diameter	mm	900	1020	1100			
<b>G</b> Water inlet/water outlet PN 100	DN		25	32			
<b>H</b> Desliming	DN		15	25			
<b>I</b> Dewatering flue gas condensate			3/4"				
* Heat output at full load up to	kW	15	25	43			
Connectable burner output max.	kW	730	1100	1480			
Heating flue gas temperature max.	°C		350				
Weight without water filling	kg	320	387	442			
Pressure equipment volume V	l	43,1	51,6	71,6			
Operating overpressure PS	bar	10 – 32	40	10 – 32	40	10 – 32	40
Product PS x V	max.	1379,2	1724	1651,2	2064	2291,2	2864
PED 2014/68/EU, Annex II, Diagram 5, Category		III	IV	III	IV	III	IV

\*The values can deviate depending on the burner output, operating overpressure and utilization of the steam generator.

Rights reserved for technical alterations.

